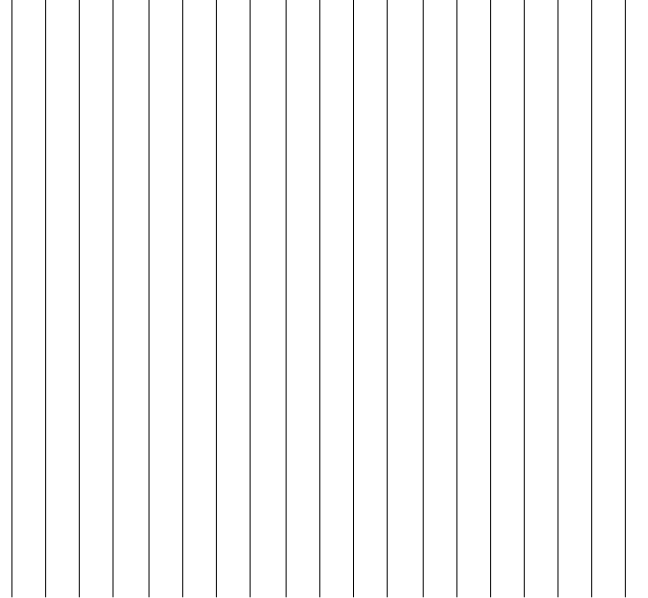




EATON RESIDENCES

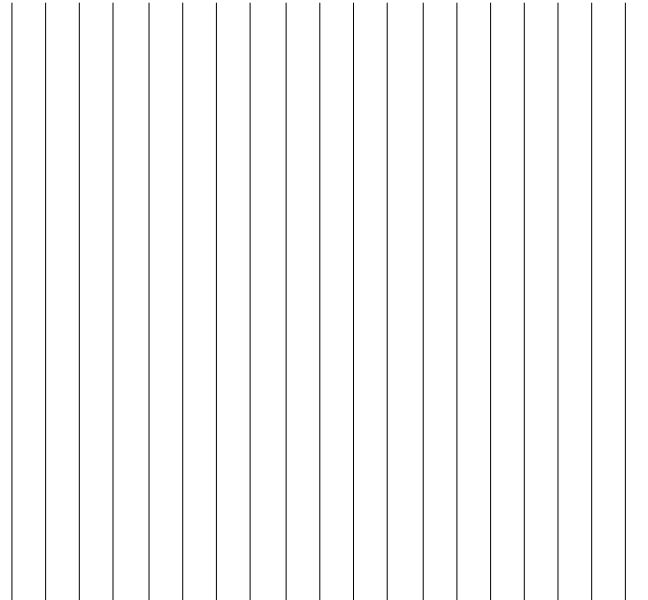
26 JALAN KIA PENG, KUALA LUMPUR





ALTITUDE
of
LUXURY

*Situated close to the famous Petronas Twin Towers in
Kuala Lumpur, Eaton Residences is a luxury development
for affluent city-dwellers who enjoy being at the heart of
one of the world's most exciting cities.*



MOST BEAUTIFUL
skyline
IN THE WORLD

- World Atlas

EATON RESIDENCES

26 JALAN KIA PENG, KUALA LUMPUR





KUALA LUMPUR:

A TOP TEN MOST LIVEABLE CITY IN ASIA

Malaysia is a driving force in today's global economy, having had a strong GDP growth in the country's rapid development of infrastructure and a high functioning transportation system on par with developed countries. Malaysia has always taken the top spot in rankings conducted by various international bodies.



MALAYSIA WORLD RANKING

4th World's Best Shopping Destination (2019)
Source: Tourism Malaysia

5th World's Best Retirement Paradise (2019)
Source: CNBC News Channel

13th World's Best Entrepreneurship Country (2019)
Source: CEO World Magazine

16th World's Most Peaceful Country (2020)
Source: Global Peace Index 2020

Kuala Lumpur is home to 1.8 million people in an area that spans over 243 square kilometres. The average city dwellers and expatriates work and play in this vibrant and cosmopolitan city. Malaysia is home to diverse, multicultural communities who live harmoniously.



KUALA LUMPUR, THE DREAM LOCATION



#2

KUALA LUMPUR RANKED **SECOND** BEST CITY IN THE WORLD TO LIVE IN FOR EXPATRIATES.

#1 TAIPEI

#2 KUALA LUMPUR

#3 HO CHI MINH CITY

#4 SINGAPORE

Source: InterNations



4TH TIME MALAYSIA WINS FOURTH WORLD HEALTH AWARD 2020.

Malaysia won the award for "Health and Medical Tourism: Destination of the Year 2020" at the Medical Tourism Award 2020 for the fourth time in a row, together with recognition for Malaysian healthcare institutions located in Kuala Lumpur.

Source award: Medical Tourism Award 2020

- **Sunway Fertility Centre**
(International Fertility Clinic of the Year)
- **Prince Court Medical Centre**
(International Hospital of the Year)
- **Sunway Eye Centre**
(International Eye Clinic of the Year)
- **Thompson Hospital Kota Damansara**
(Best Quality Initiative)



BEST COUNTRY IN THE WORLD TO INVEST OR DO BUSINESS IN 2019

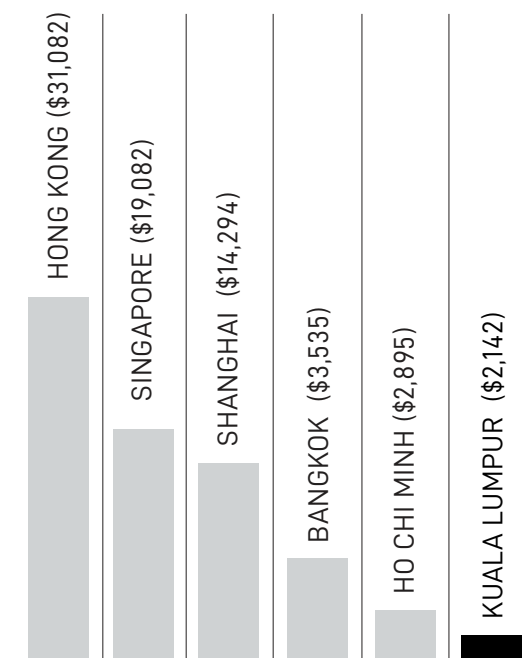
Kuala Lumpur is a high-yielding city where a lot of companies operating in the city are listed in the Fortune 500 and Forbes 2000 with established regional operations all over Asia. Apart from that, the Malaysian government has tabled out attractive policies for these companies to prosper further.

- Investors could hold 100% of the equity in all project investments
- Foreign companies in the manufacturing sector are allowed to employ expatriates
- Attractive tax incentives to foreign companies

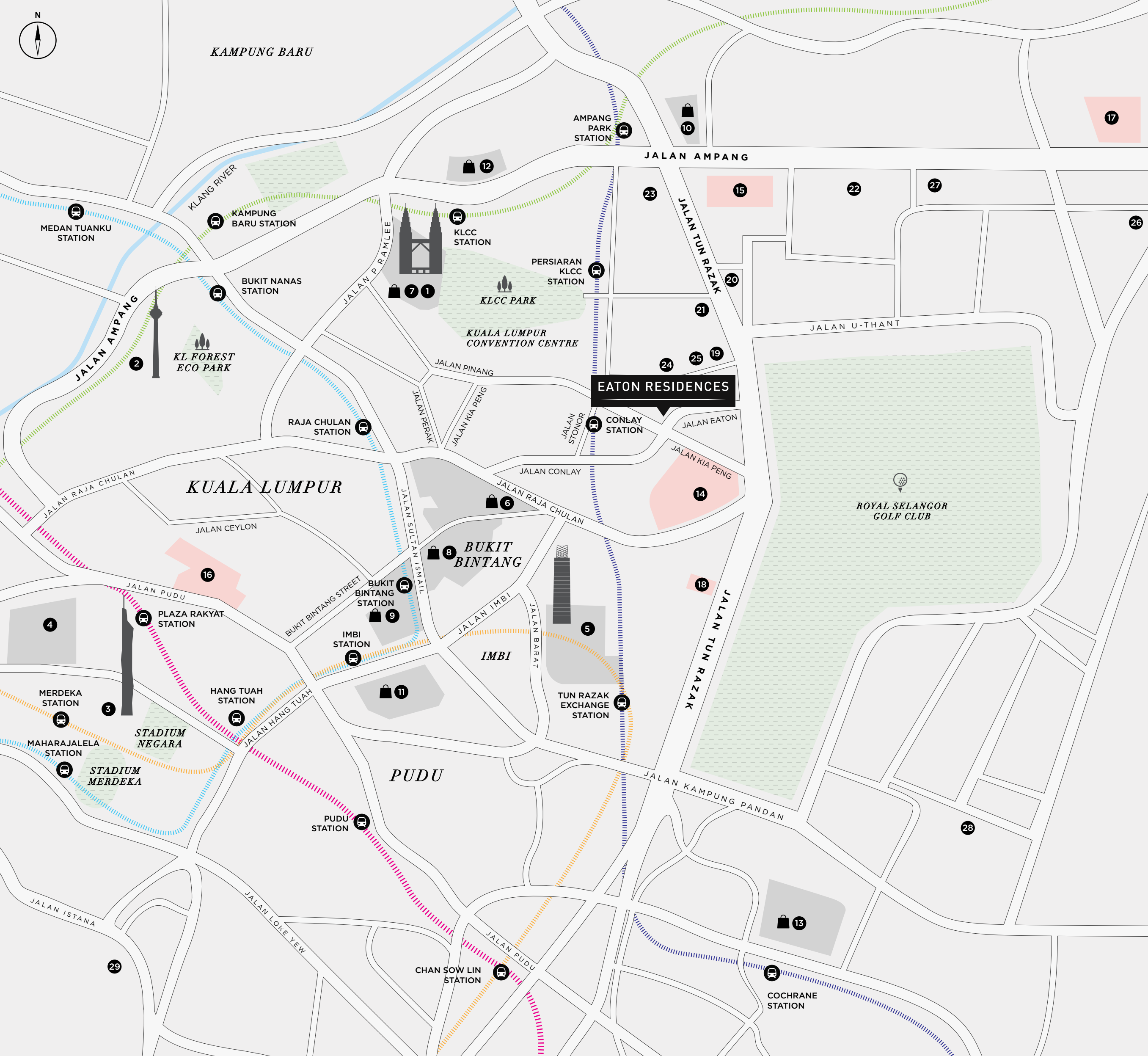
Source: Malaysian Investment Development Authority (MIDA)



KUALA LUMPUR HAS THE **LOWEST PROPERTY PRICE** IN A CITY CENTRE COMPARED TO OTHER MAJOR CITIES IN THE WORLD.



*AVERAGE PRICE OF PER SQUARE METER IN CITY CENTRE IN USD



LANDMARKS

1. Petronas Twin Tower
2. Kuala Lumpur Tower
3. Merdeka PNB 118
4. Petaling Street Market (China Town)
5. Tun Razak Exchange (TRX)

MALLS

6. Pavilion Kuala Lumpur
7. Suria KLCC
8. Lot 10
9. Sungei Wang Plaza
10. The Intermark
11. Berjaya Times Square
12. Avenue K
13. Ikea Cheras

MEDICAL

14. Prince Court Medical Centre
15. HSC Medical Center
16. Tung Shin Hospital
17. Gleneagles Hospital
18. Beverly Wilshire Medical Center

EMBASSIES

19. Embassy of Japan
20. Embassy of U.S
21. Singapore High Commission
22. Embassy of China
23. British High Commission
24. Embassy of Vietnam

EDUCATION

25. EtonHouse Malaysia
26. International School of Kuala Lumpur
27. Sayfol International School
28. Taylor's International School
29. Alice Smith School





WORLD-CLASS AMENITIES

Kuala Lumpur's urban setting is strategically planned to make sure important amenities are always within reach. Eaton Residences is close to top-rated international schools, state-of-the-art medical centers, some of the best shopping centers in the world and beautiful recreational parks.

INTERNATIONAL SCHOOLS



- 100M** Etonhouse International School
- 1.35KM** Sayfol International School
- 1.9KM** International School of Kuala Lumpur
- 2.2KM** Taylors International School
- 3.3KM** Alice Smith School
- 6.0KM** Fairview International School

SHOPPING MALLS



- 575M** Pavilion Kuala Lumpur
- 780M** The Linc
- 800M** Fahrenheit 88
- 965M** Suria KLCC
- 1.0KM** Intermark
- 1.0KM** Avenue K

- 300M** Prince Court Medical Centre
- 600M** Beverly Wilshire Medical Centre
- 1.03KM** HSC Medical Center
- 1.8KM** Tung Shin Hospital
- 2.4KM** Gleneagles Kuala Lumpur

MEDICAL CENTRES



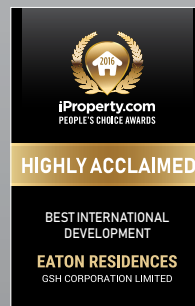
RECREATION



- 340M** Royal Selangor Golf Club
- 550M** KLCC Park
- 1.6KM** Saloma Link Bridge
- 1.9KM** KL Forest Eco Park
- 3.5KM** KL Bird Park

THE REFLECTION *of* SUCCESS

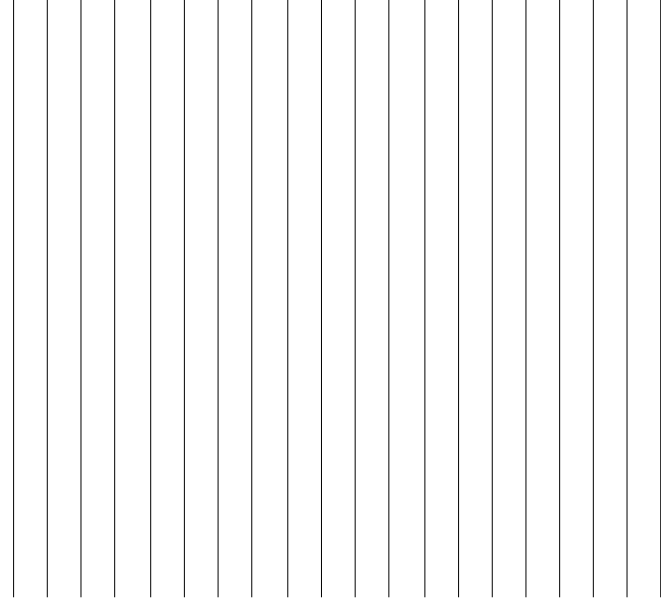
Eaton Residences soars higher where others have not. This award-winning iconic building by Singapore's GSH Corporation, is designed by world-renowned architectural firm, Swan & Maclaren, and engineered by Arup.





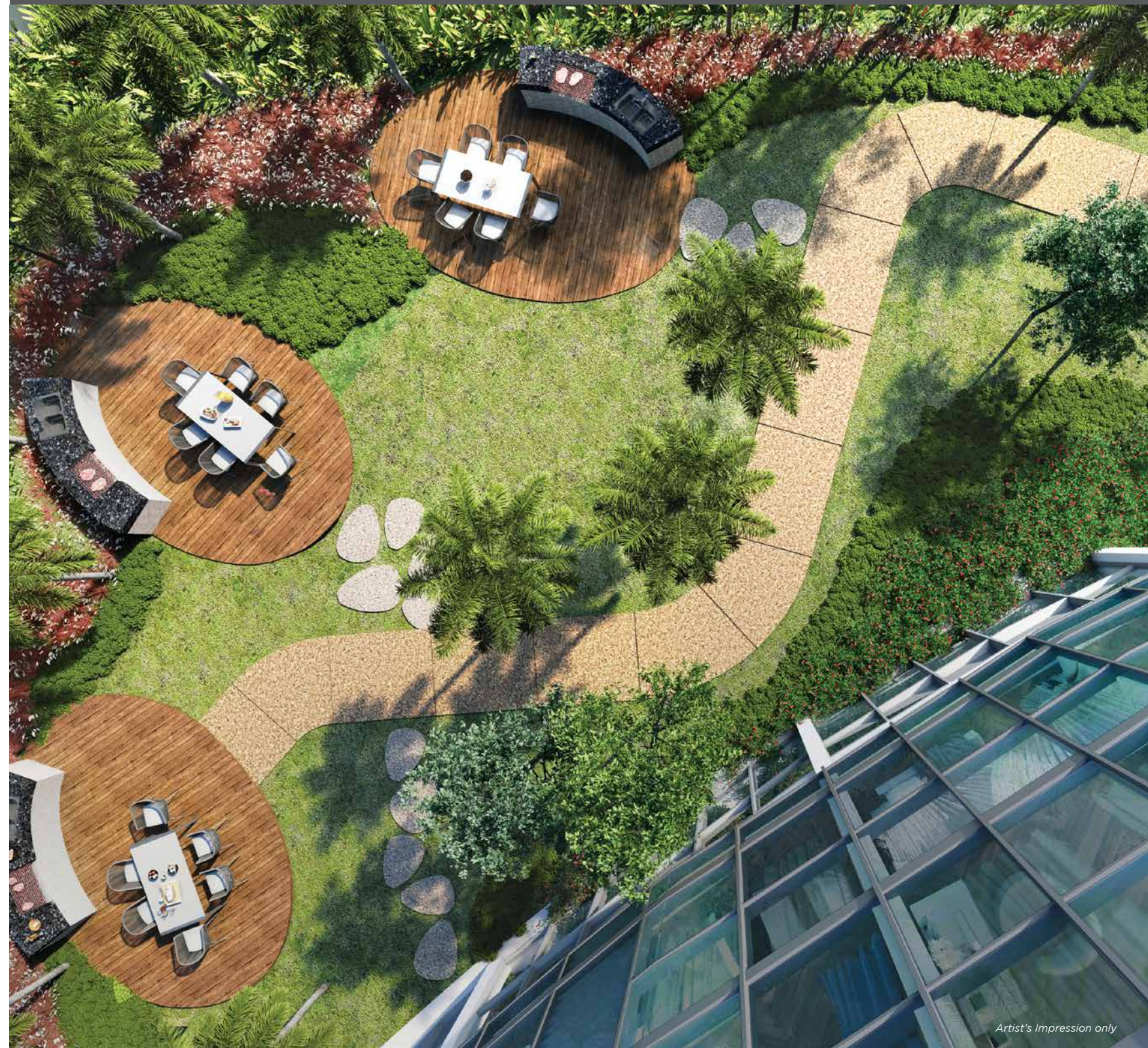
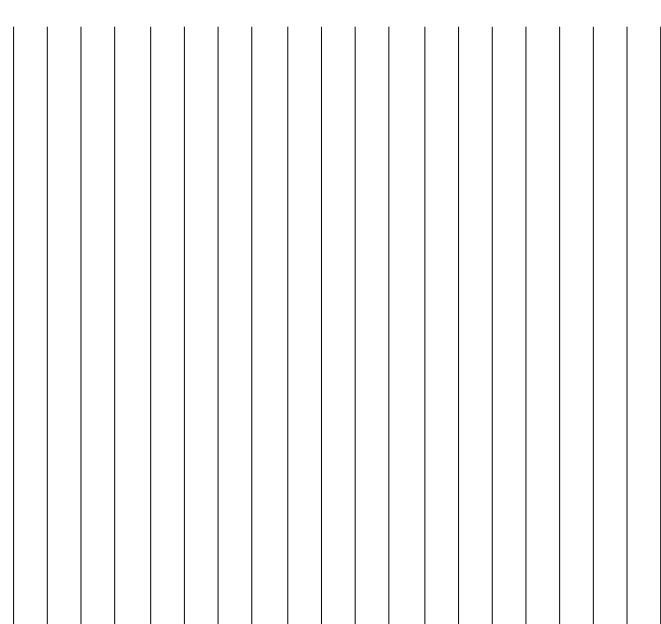
Be enveloped in luxury the moment you step foot in the grand lobby. The modern aesthetics, innovative lightings and elegant furnishings further elevate the space to make you feel welcomed, every day.

THE MOMENT *of*
ARRIVAL



THE OASIS *at* **THE TOP**

Start or end your day in
ADVENTURE MEADOW, a beautifully
designed garden by the renowned
Swan & Maclaren. An outdoor oasis for
residents to indulge and relax.



LOUNGE *in*
THE SKY





RETREAT *above*
THE CLOUDS

ELEVATED WELLNESS gym on the 50th floor provides an anti-gravity yoga room, a wellness centre and high-performing gym equipment. Realign your mind, body and soul, while savouring in Kuala Lumpur's panoramic view from the top.

UNFETTERED
majestic
VIEW





THE BIGGEST, LONGEST AND HIGHEST
Altitude Cantilever Sky Pool

Artist's Impression only

THE
MALAYSIA
BOOK
of **RECORDS**®

LIVING
on
THE EDGE

The Sky Pool extends out of Level 51 which will make you feel like living on the edge, literally. You can certainly experience Kuala Lumpur's spectacular skyline from here.

SERENITY
on
THE HORIZON





Artist's Impression only

TANTALIZE
— *your* —
TASTE BUDS

Indulge in a gastronomic adventure at our Gourmet Kitchen. Tantalize your taste buds while spending quality time with your loved ones.

EPITOME *of* SUCCESS

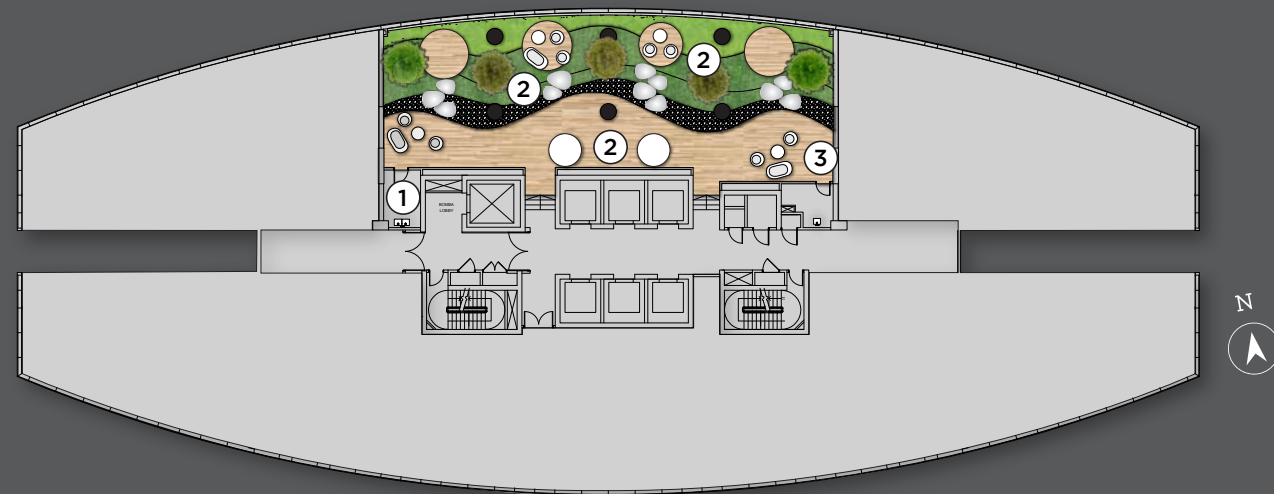
Towering at 52 storeys high with 632 luxury serviced units, Eaton Residences offers a wide array of top-notch amenities curated only for the best.



ADVENTURE MEADOW

LEVEL 8

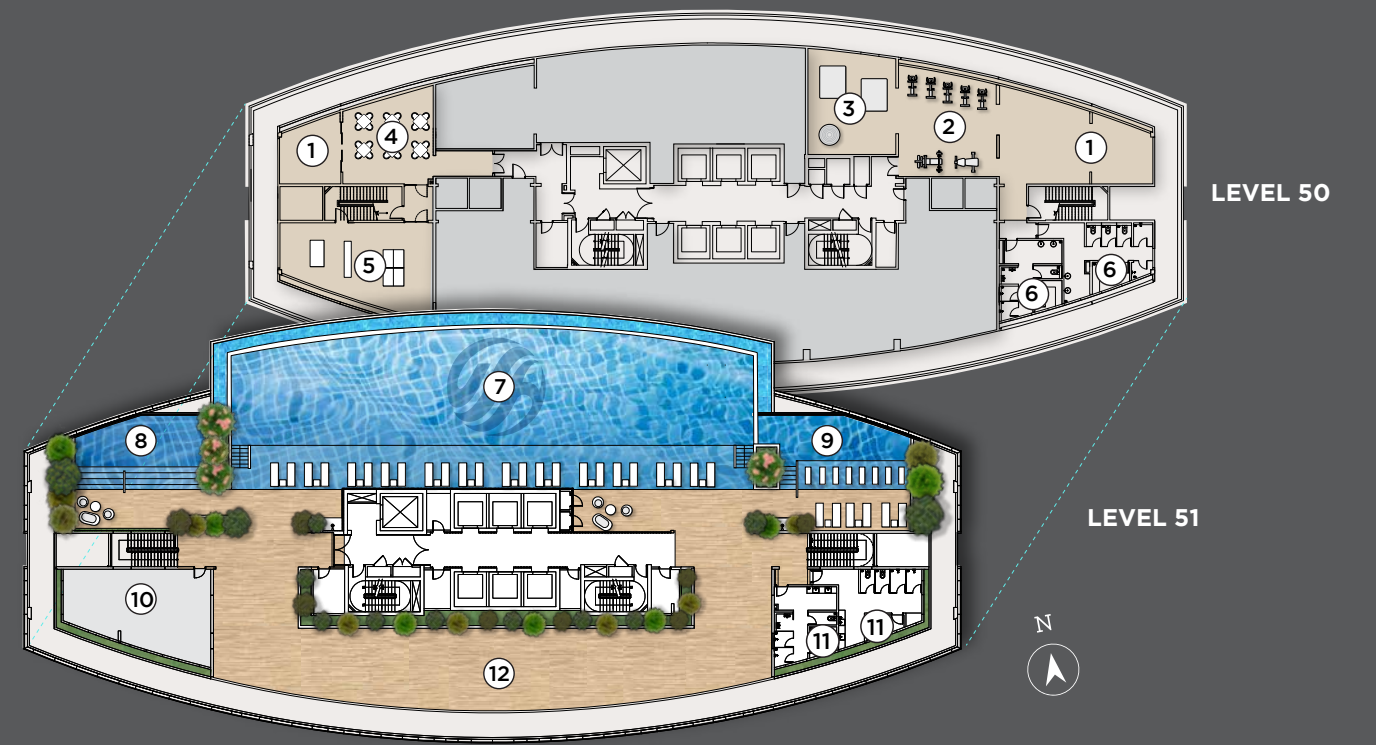
- ① Playground
- ② Multi-Purpose Hall
- ③ Rock Garden
- ④ Reading Alcove
- ⑤ Board Games
- ⑥ Multi-purpose Deck
- ⑦ Table Tennis
- ⑧ Multi-purpose Lawn
- ⑨ Fitness Stations
- ⑩ BBQ Pods



TRANQUIL PLATEAU

LEVEL 33A

- ① Kitchenette
- ② Sky Lounge
- ③ Day Bed Garden

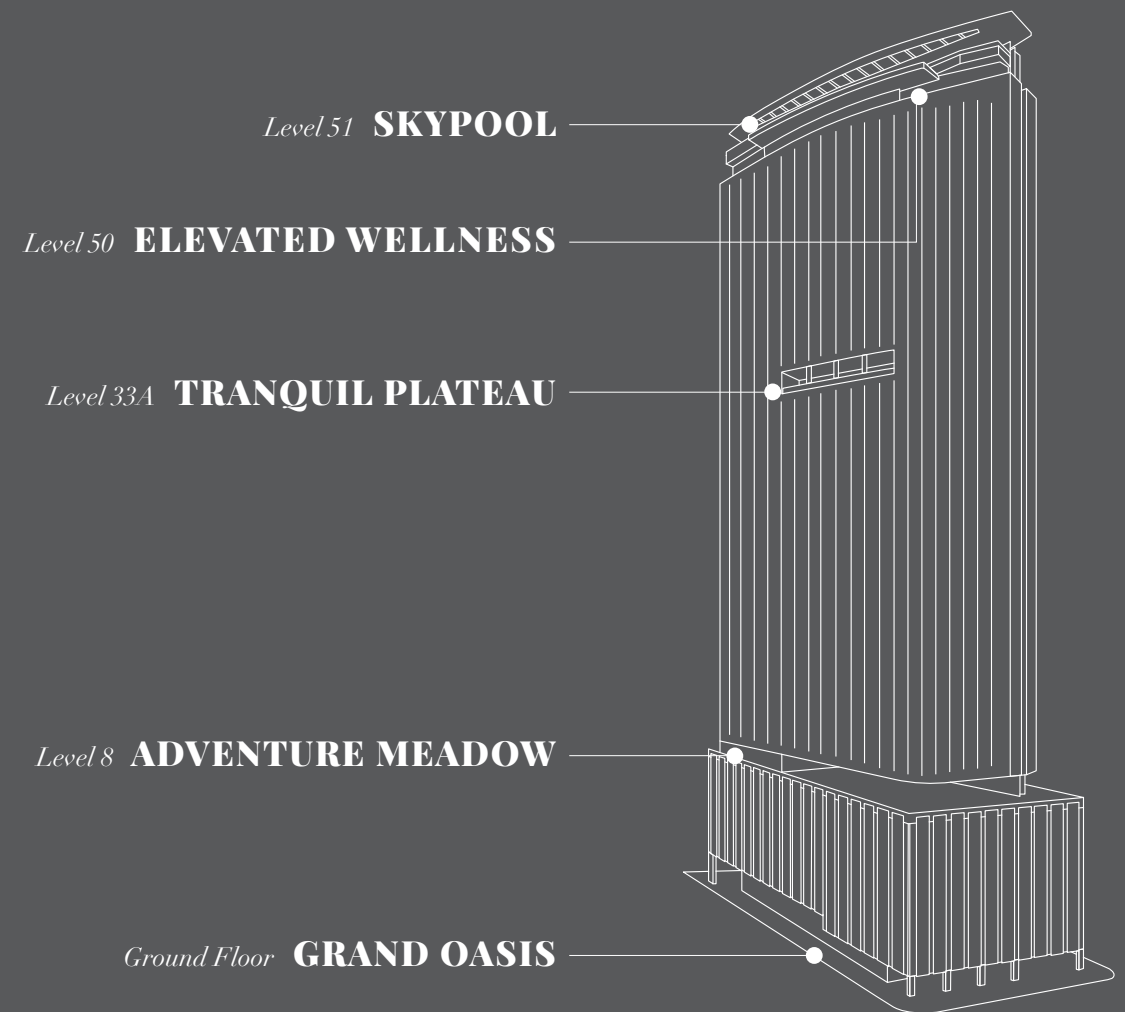


SKY DECK

LEVEL 50

LEVEL 51

- ① Chill-Out Terrace
- ② Sky Gym
- ③ Anti-Gravity Yoga Room
- ④ Multi-Purpose Hall
- ⑤ Games Room
- ⑥ Sauna
- ⑦ Infinity Pool
- ⑧ Wading Pool
- ⑨ Leisure Pool
- ⑩ Gourmet Kitchen
- ⑪ Steam Room
- ⑫ Sky Lounge



Level 51 **SKYPOOL**

Level 50 **ELEVATED WELLNESS**

Level 33A **TRANQUIL PLATEAU**

Level 8 **ADVENTURE MEADOW**

Ground Floor **GRAND OASIS**



Artist's Impression only

A SIGHT
— *to* —
BEHOLD

The curved facade of the living room allows unfiltered views of Kuala Lumpur's mesmerizing skyline as well as the undulating green terrain of the Royal Selangor Golf Club.



Artist's Impression only

DEFINITION *of* LUXURY

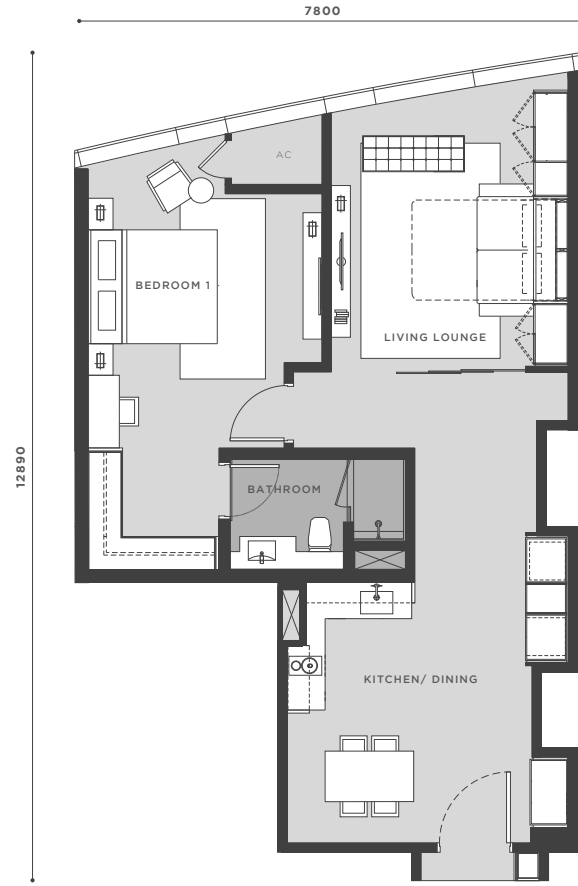
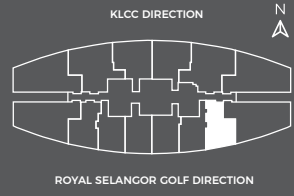
Eaton Residences is located at one of the most desirable addresses in Malaysia. All units are furnished by designer labels and fitted with Volakas marble from Greece, to give it that timeless look.

TYPE
A5

840 SQ.FT.
78 SQ.M

1 BEDROOM
1 BATH

STOREY 23A-33 & 35-47

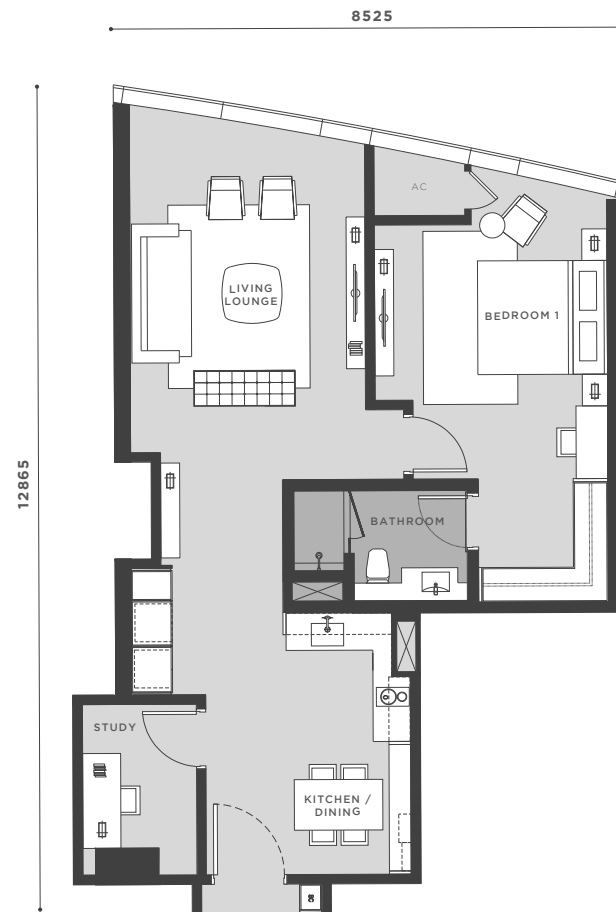
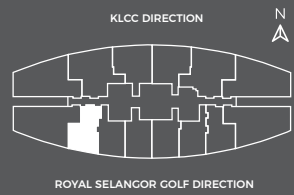


TYPE
B10

872 SQ.FT.
81 SQ.M

1 BEDROOM
1 BATH
1 STUDY

STOREY 23A-33 & 35-47

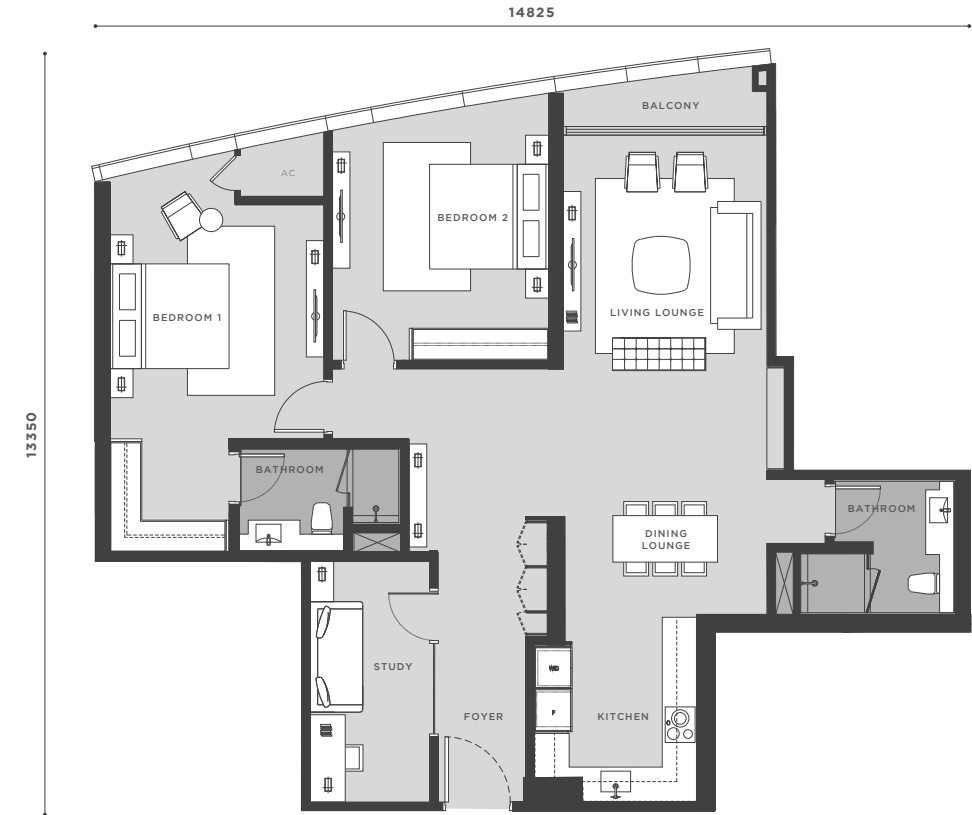
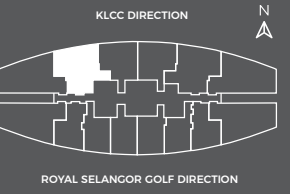


TYPE
C4

1410 SQ.FT.
131 SQ.M

2 BEDROOMS
2 BATHS
1 STUDY

STOREY 23A-33 & 35-36

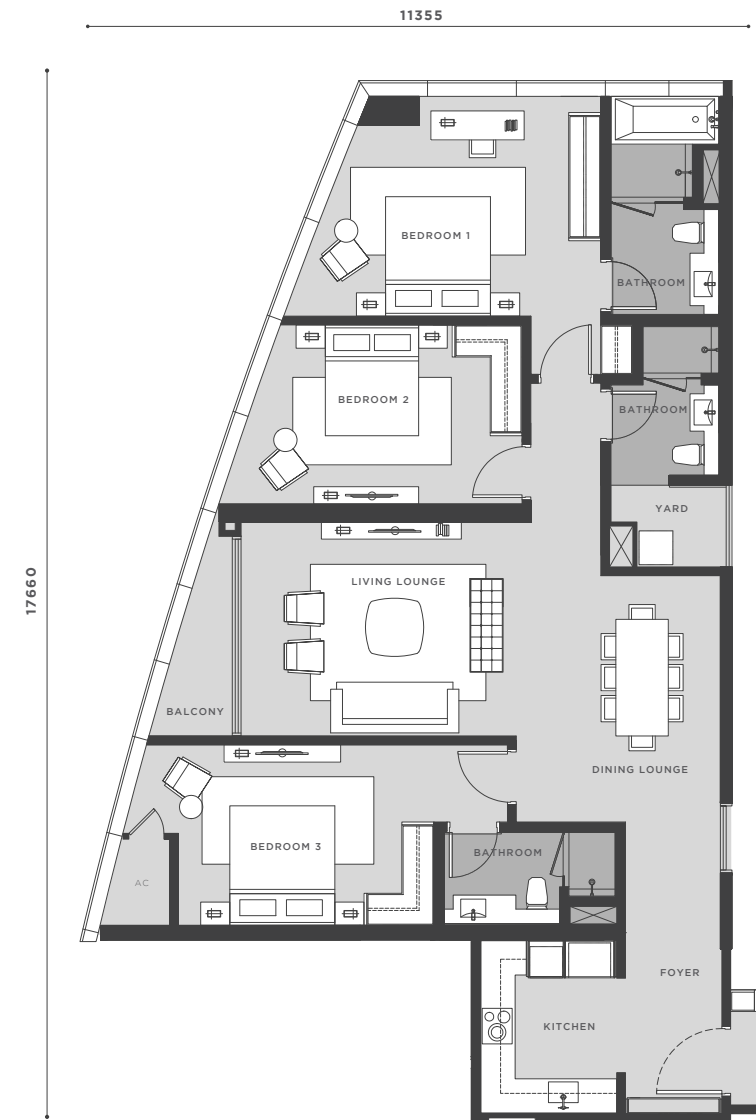
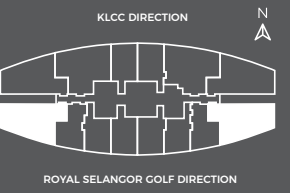


TYPE
D1

1550 SQ.FT.
144 SQ.M

3 BEDROOMS
3 BATHS

STOREY 23A-33 & 35-47

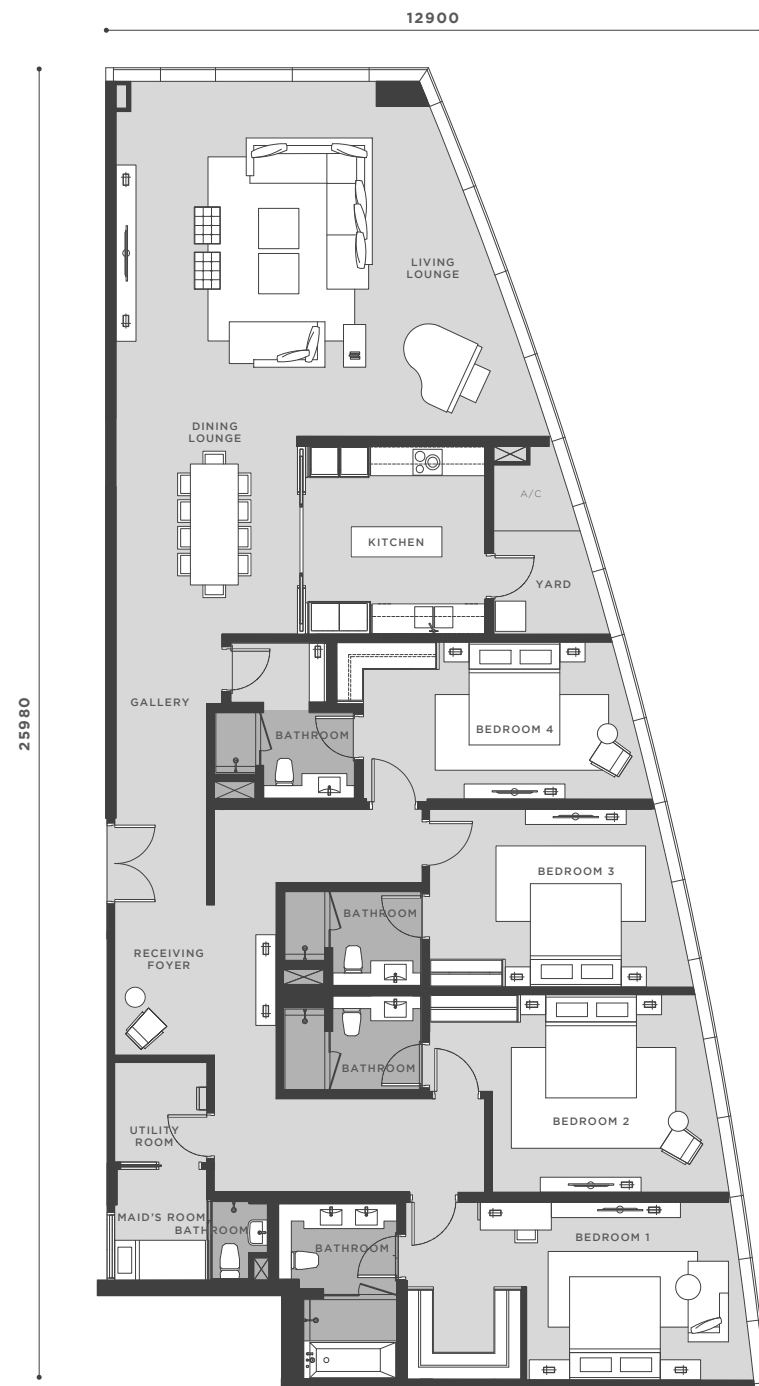
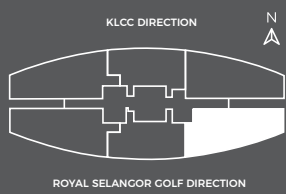


TYPE
P4

2831 SQ.FT.
263 SQ.M

4 BEDROOMS
4 BATHS
1 MAID'S ROOM

STOREY 47-48



SPECIFICATIONS

STRUCTURE	Reinforced Concrete Structure	
WALL	Reinforced Concrete / Lightweight Partition / Curtain Wall	
ROOFING COVERING	Reinforced Concrete	
ROOF FRAMING	Top Roof Covering Is Aluminium	
CEILING	Plaster Ceiling And Paint / Skim Coat And Paint	
WINDOWS	Curtain Glasss where Applicable Window Panel With Openable Window (Where Applicable)	
DOORS	Front Entrance Foor Bedroom / Bathroom Balcony	- Fire-Rated Door - Hollow core door - Aluminium Frame Glass Panel Sliding (Type C4 & C5, D1 -D6)
IRONMONGERY	Quality Locksets	
WALL FINISHES	Bathroom Kitchen	- Tiles To Ceiling Height - Tiles To Ceiling Height
FLOOR FINISHES	Living / Dining Bedroom Master Bathroom Common Bathroom Kitchen A/C Compartment Powder Room Yard Balcony Store Utility	- Marble - Engineered Timber Flooring - Marble - Tiles - Marble - Cement Render - Marble (Type D5,D6,P2,P5) - Tiles (Type C1,D1,D2,D5,D6,P1-P6) - Tiles (Type C4,C5,D1-D6) - Tiles (Type D5,D6,P1-P6) - Tiles
SANITARY AND PLUMBING FITTINGS	Water Closet Hand Basin Toilet Roll Holder Water Tap Rain Shower Shower Rose Bath Tub (Type C1,D1-D6, P1-P6)	
ELETRICAL INSTALLATION	All Electrical Installation TNB Standard	

Internal Telecommunications Trunking And Cabling Internet And Telephone Points Provided



Coral Bay, Sabah, Malaysia

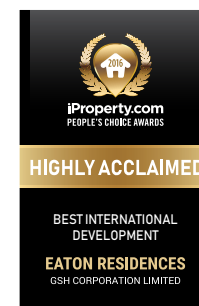


Sutera Harbour, Sabah, Malaysia



CREATING WORLD-CLASS SPACES

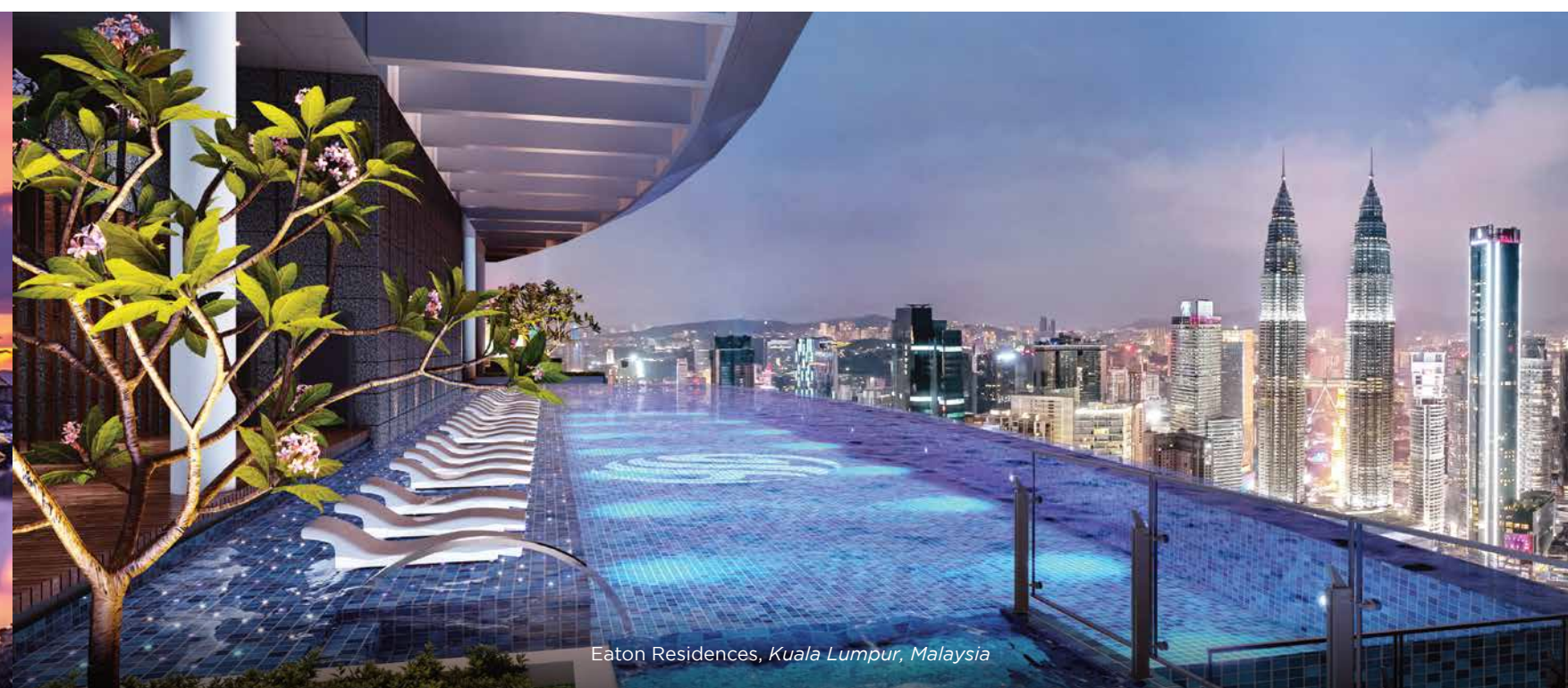
Listed on the Mainboard of the Singapore Exchange, GSH Corporation Limited is a growing property developer in Asia, with projects under development in Malaysia and China. Driven by its compelling vision to create world-class spaces for living, business and leisure, GSH Corporation shapes the future through its premium real estate and hospitality assets.



We own and operate an irreplaceable portfolio of iconic properties located in the world's most dynamic markets under the GSH Corporation's best leadership. Each project is carefully selected for its unique location, while its architecture, interior finishes, landscaping and amenities all work together harmoniously to create world-class living spaces.



Sutera Harbour, Sabah, Malaysia



Eaton Residences, Kuala Lumpur, Malaysia

